

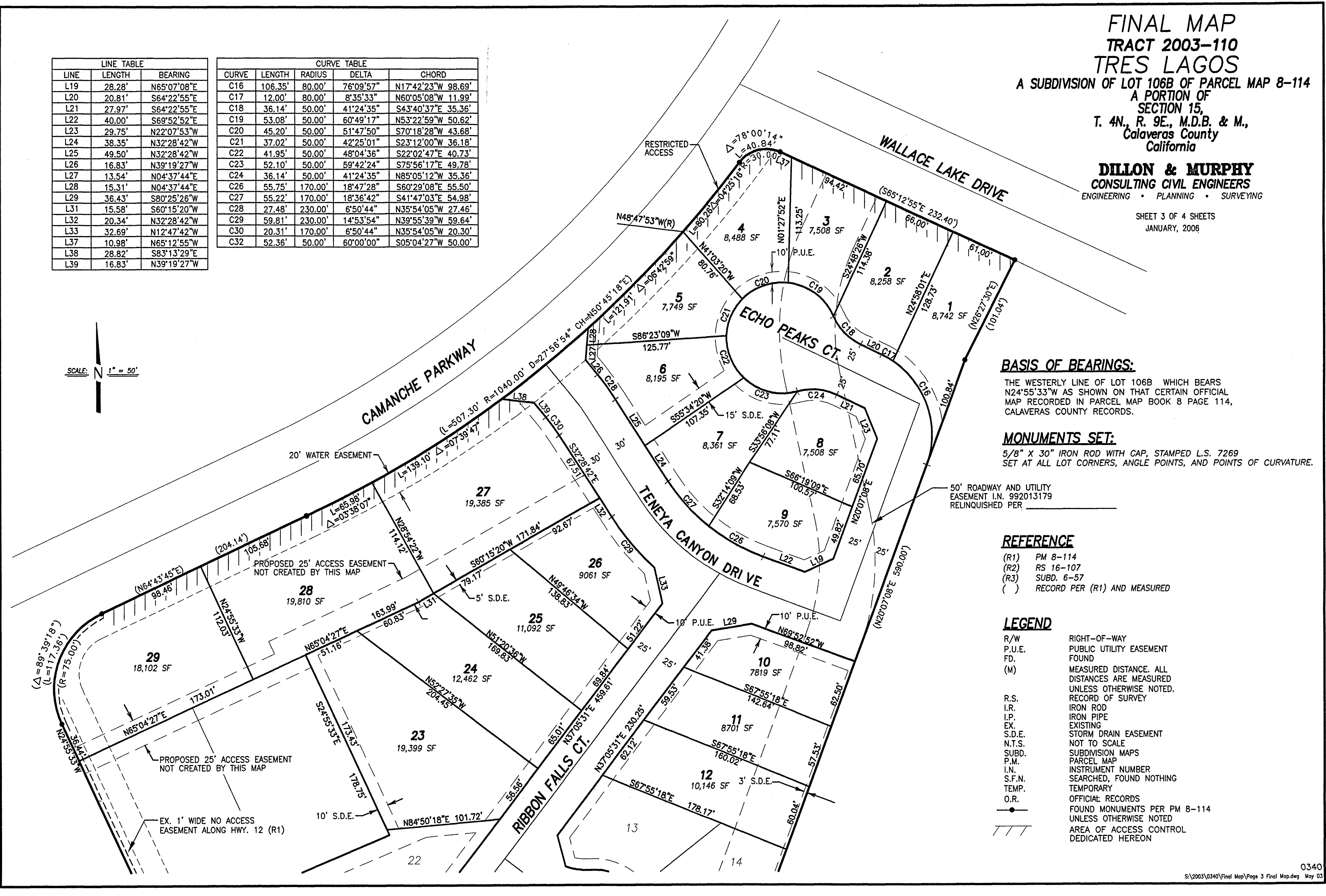
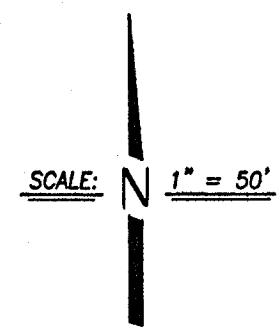
FINAL MAP
TRACT 2003-110
TRES LAGOS
 A SUBDIVISION OF LOT 106B OF PARCEL MAP 8-114
 A PORTION OF
 SECTION 15,
 T. 4N., R. 9E., M.D.B. & M.,
 Calaveras County
 California

DILLON & MURPHY
 CONSULTING CIVIL ENGINEERS
 ENGINEERING • PLANNING • SURVEYING

SHEET 3 OF 4 SHEETS
 JANUARY, 2006

LINE TABLE		
LINE	LENGTH	BEARING
L19	28.28'	N65°07'08"E
L20	20.81'	S64°22'55"E
L21	27.97'	S64°22'55"E
L22	40.00'	S69°52'52"E
L23	29.75'	N22°07'53"W
L24	38.35'	N32°28'42"W
L25	49.50'	N32°28'42"W
L26	16.83'	N39°19'27"W
L27	13.54'	N04°37'44"E
L28	15.31'	N04°37'44"E
L29	36.43'	S80°25'26"W
L31	15.58'	S60°15'20"W
L32	20.34'	N32°28'42"W
L33	32.69'	N12°47'42"W
L37	10.98'	N65°12'55"W
L38	28.82'	S83°13'29"E
L39	16.83'	N39°19'27"W

CURVE TABLE				
CURVE	LENGTH	RADIUS	DELTA	CHORD
C16	106.35'	80.00'	76°09'57"	N17°42'23"W 98.69'
C17	12.00'	80.00'	8°35'33"	N60°05'08"W 11.99'
C18	36.14'	50.00'	41°24'35"	S43°40'37"E 35.36'
C19	53.08'	50.00'	60°49'17"	N53°22'59"W 50.62'
C20	45.20'	50.00'	51°47'50"	S70°18'28"W 43.68'
C21	37.02'	50.00'	42°25'01"	S23°12'00"W 36.18'
C22	41.95'	50.00'	48°04'36"	S22°02'47"E 40.73'
C23	52.10'	50.00'	59°42'24"	S75°56'17"E 49.78'
C24	36.14'	50.00'	41°24'35"	N85°05'12"W 35.36'
C26	55.75'	170.00'	18°47'28"	S60°29'08"E 55.50'
C27	55.22'	170.00'	18°36'42"	S41°47'03"E 54.98'
C28	27.48'	230.00'	6°50'44"	N35°54'05"W 27.46'
C29	59.81'	230.00'	14°53'54"	N39°55'39"W 59.64'
C30	20.31'	170.00'	6°50'44"	N35°54'05"W 20.30'
C32	52.36'	50.00'	60°00'00"	S05°04'27"W 50.00'



BASIS OF BEARINGS:

THE WESTERLY LINE OF LOT 106B WHICH BEARS N24°55'33"W AS SHOWN ON THAT CERTAIN OFFICIAL MAP RECORDED IN PARCEL MAP BOOK 8 PAGE 114, CALAVERAS COUNTY RECORDS.

MONUMENTS SET:

5/8" X 30" IRON ROD WITH CAP, STAMPED L.S. 7269 SET AT ALL LOT CORNERS, ANGLE POINTS, AND POINTS OF CURVATURE.

REFERENCE

- (R1) PM 8-114
- (R2) RS 16-107
- (R3) SUBD. 6-57
- () RECORD PER (R1) AND MEASURED

LEGEND

- R/W RIGHT-OF-WAY
- P.U.E. PUBLIC UTILITY EASEMENT
- FD. FOUND
- (M) MEASURED DISTANCE. ALL DISTANCES ARE MEASURED UNLESS OTHERWISE NOTED.
- R.S. RECORD OF SURVEY
- I.R. IRON ROD
- I.P. IRON PIPE
- EX. EXISTING
- S.D.E. STORM DRAIN EASEMENT
- N.T.S. NOT TO SCALE
- SUBD. SUBDIVISION MAPS
- P.M. PARCEL MAP
- I.N. INSTRUMENT NUMBER
- S.F.N. SEARCHED, FOUND NOTHING
- TEMP. TEMPORARY
- O.R. OFFICIAL RECORDS
- FOUND MONUMENTS PER PM 8-114 UNLESS OTHERWISE NOTED
- /// AREA OF ACCESS CONTROL DEDICATED HEREON

FINAL MAP
TRACT 2003-110
TRES LAGOS
 A SUBDIVISION OF LOT 106B OF PARCEL MAP 8-114
 A PORTION OF
 SECTION 15,
 T. 4N., R. 9E., M.D.B. & M.,
 Calaveras County
 California

DILLON & MURPHY
 CONSULTING CIVIL ENGINEERS
 ENGINEERING • PLANNING • SURVEYING

SHEET 4 OF 4 SHEETS
 JANUARY, 2006

BASIS OF BEARINGS:

THE WESTERLY LINE OF LOT 106B WHICH BEARS N24°55'33"W AS SHOWN ON THAT CERTAIN OFFICIAL MAP RECORDED IN PARCEL MAP BOOK 8 PAGE 114, CALAVERAS COUNTY RECORDS.

MONUMENTS SET:

5/8" X 30" IRON ROD WITH CAP, STAMPED L.S. 7269
 SET AT ALL LOT CORNERS, ANGLE POINTS, AND POINTS OF CURVATURE.

REFERENCE

- (R1) PM 8-114
- (R2) RS 16-107
- (R3) SUBD. 6-57
- () RECORD PER (R1) AND MEASURED

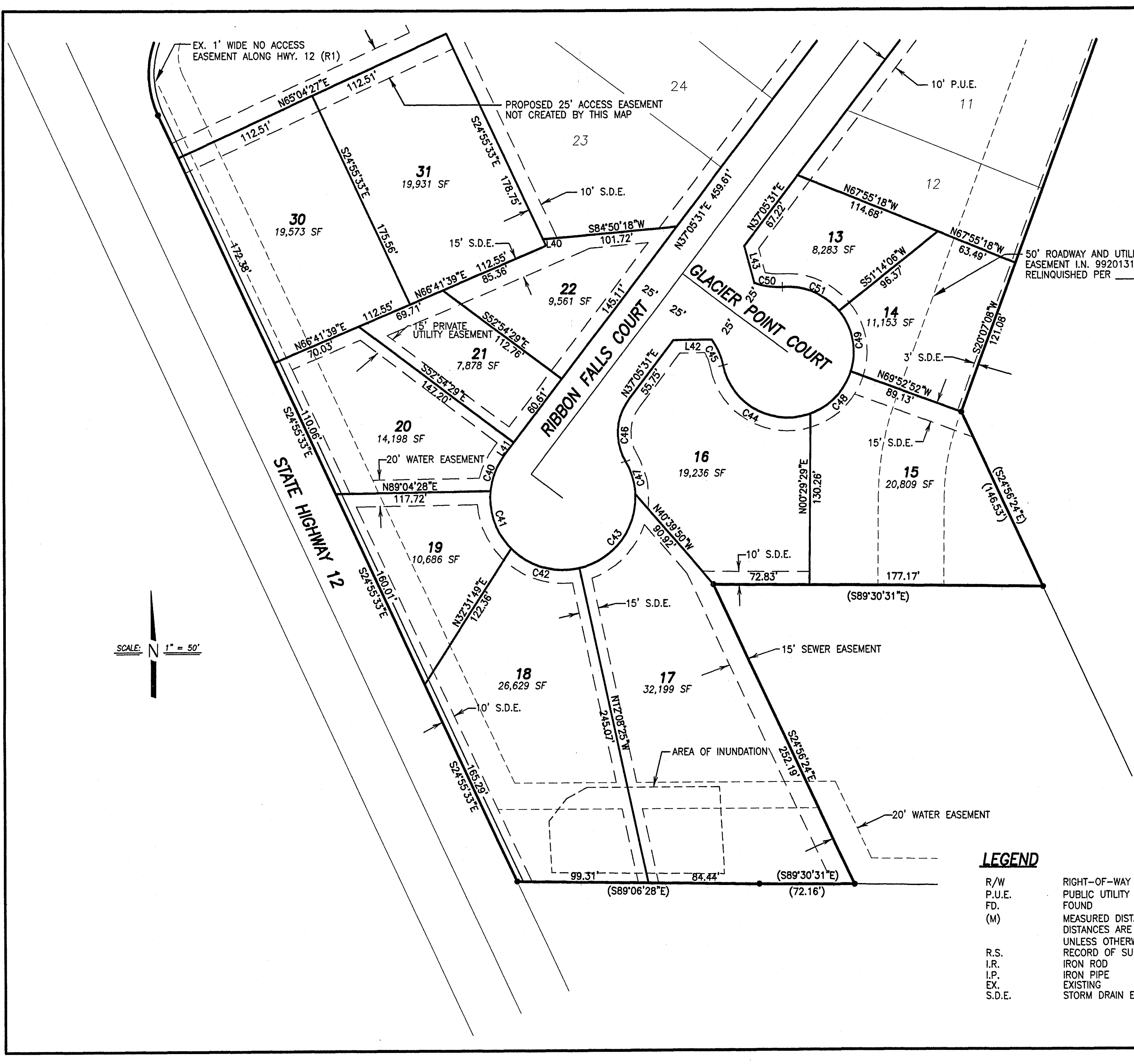
CURVE TABLE				
CURVE	LENGTH	RADIUS	DELTA	CHORD
C40	30.32'	55.00'	31°35'17"	N21°17'53"E 29.94'
C41	48.02'	55.00'	50°01'23"	N19°30'27"W 46.51'
C42	56.17'	55.00'	58°31'05"	S73°46'40"E 53.76'
C43	76.42'	55.00'	79°36'43"	S37°09'26"W 70.42'
C44	85.91'	50.00'	98°26'27"	N60°43'07"W 75.72'
C45	21.83'	50.00'	25°01'00"	N24°00'24"W 21.66'
C46	50.42'	43.00'	67°11'06"	S03°29'58"W 47.58'
C47	26.34'	55.00'	27°26'40"	S16°22'15"E 26.09'
C48	45.64'	50.00'	52°17'55"	S43°54'42"W 44.07'
C49	49.33'	50.00'	56°31'39"	S10°30'05"E 47.35'
C50	21.83'	50.00'	25°01'00"	S81°48'33"E 21.66'
C51	48.48'	50.00'	55°33'09"	N66°32'29"W 46.60'

LINE TABLE		
LINE	LENGTH	BEARING
L38	27.89'	N20°53'03"E
L40	5.31'	N24°55'33"W
L41	11.22'	N37°05'31"E
L42	29.16'	N89°03'22"E
L43	29.16'	S14°52'19"E

LEGEND

- | | | | |
|--------|---|--------|---|
| R/W | RIGHT-OF-WAY | N.T.S. | NOT TO SCALE |
| P.U.E. | PUBLIC UTILITY EASEMENT | SUBD. | SUBDIVISION MAP |
| FD. | FOUND | P.M. | PARCEL MAP |
| (M) | MEASURED DISTANCE. ALL DISTANCES ARE MEASURED UNLESS OTHERWISE NOTED. | I.N. | INSTRUMENT NUMBER |
| R.S. | RECORD OF SURVEY | S.F.N. | SEARCHED, FOUND NOTHING |
| I.R. | IRON ROD | TEMP. | TEMPORARY |
| I.P. | IRON PIPE | O.R. | OFFICIAL RECORDS |
| EX. | EXISTING | —●— | FOUND MONUMENTS PER PM 8-114 UNLESS OTHERWISE NOTED |
| S.D.E. | STORM DRAIN EASEMENT | /// | AREA OF ACCESS CONTROL DEDICATED HEREON |

SCALE: 1" = 50'



TRACT 2003-110 TRES LAGOS

A SUBDIVISION OF LOT 106B OF PARCEL MAP 8-114
A PORTION OF
SECTION 15,
T. 4N., R. 9E., M.D.B. & M.,
Calaveras County
California

SHEET 2 OF 4 SHEETS
JANUARY, 2006

DILLON & MURPHY
CONSULTING CIVIL ENGINEERS
ENGINEERING • PLANNING • SURVEYING

BASIS OF BEARINGS:

THE WESTERLY LINE OF LOT 106B WHICH BEARS N24°55'33"W AS SHOWN ON THAT CERTAIN OFFICIAL MAP RECORDED IN PARCEL MAP BOOK 8 PAGE 114, CALAVERAS COUNTY RECORDS.

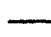
MONUMENTS SET:

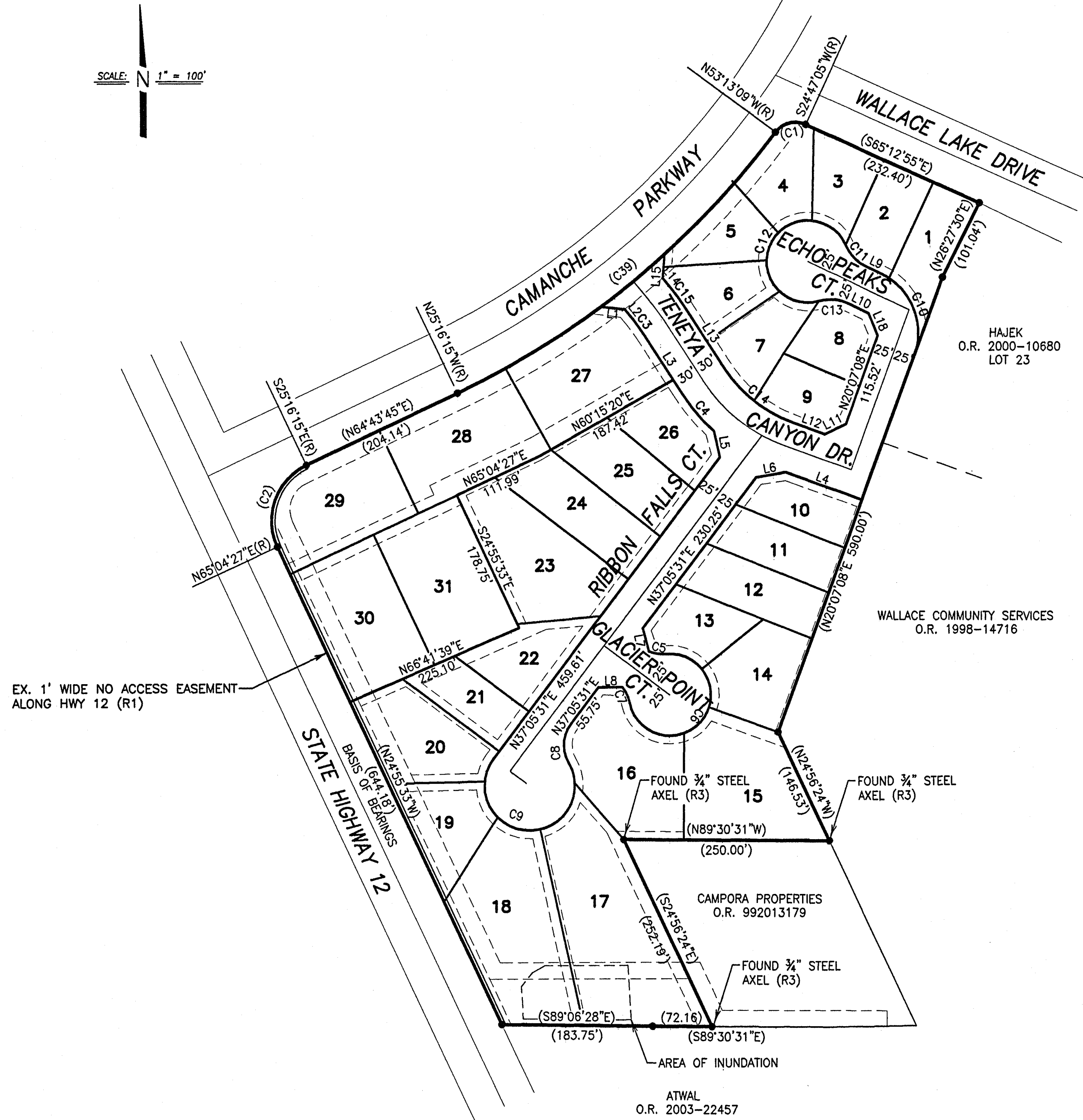
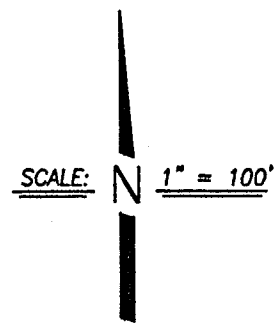
5/8" X 30" IRON ROD WITH CAP, STAMPED L.S. 7269 AND SHOWN THUS  UNLESS OTHERWISE NOTED.

REFERENCE

- (R1) PM 8-114
- (R2) RS 16-107
- (R3) SUBD. 6-57
- () RECORD PER (R1) AND MEASURED

LEGEND

- R/W RIGHT-OF-WAY
- P.U.E. PUBLIC UTILITY EASEMENT
- FD. FOUND
- (M) MEASURED DISTANCE. ALL DISTANCES ARE MEASURED UNLESS OTHERWISE NOTED.
- R.S. RECORD OF SURVEY
- I.R. IRON ROD
- I.P. IRON PIPE
- EX. EXISTING
- N.T.S. NOT TO SCALE
- SUBD. SUBDIVISION MAPS
- P.M. PARCEL MAP
- I.N. INSTRUMENT NUMBER
- S.F.N. SEARCHED, FOUND NOTHING
- TEMP. TEMPORARY
- O.R. OFFICIAL RECORDS
-  FOUND MONUMENTS PER PM 8-114 UNLESS OTHERWISE NOTED



LINE	LENGTH	BEARING
L1	28.82'	S83°13'29"E
L2	16.83'	N39°19'27"W
L3	87.85'	N32°28'42"W
L4	30.00'	S69°52'52"E
L5	28.28'	N24°52'52"W
L6	58.88'	N66°41'39"E
L7	35.44'	S14°52'19"E
L8	29.16'	N89°03'22"E
L9	20.81'	S64°22'55"E
L10	27.97'	S64°22'55"E
L11	28.28'	N65°07'08"E
L12	40.00'	S69°52'52"E
L13	87.85'	N32°28'42"W
L14	16.83'	N39°19'27"W
L15	28.85'	S04°37'44"W
L18	29.75'	N22°07'53"W

CURVE	LENGTH	RADIUS	DELTA	CHORD
C1	40.84'	30.00'	78°00'14"	S75°46'58"W 37.76'
C2	117.36'	75.00'	89°39'18"	S19°54'06"W 105.75'
C3	20.31'	170.00'	6°50'44"	N35°54'05"W 20.30'
C4	59.81'	230.00'	14°53'54"	S39°55'39"E 59.64'
C5	21.83'	50.00'	25°01'00"	S81°48'33"E 21.66'
C6	84.81'	50.00'	97°10'51"	S37°05'31"W 75.00'
C7	21.83'	50.00'	25°01'00"	S24°00'24"E 21.66'
C8	50.42'	43.00'	67°11'06"	N03°29'58"E 47.58'
C9	108.29'	55.00'	112°48'54"	N86°30'02"W 91.63'
C10	117.99'	80.00'	84°30'03"	N22°07'53"W 107.58'
C11	36.14'	50.00'	41°24'35"	S43°40'37"E 35.36'
C12	229.35'	50.00'	262°49'09"	S25°37'05"W 75.00'
C13	36.14'	50.00'	41°24'35"	N85°05'12"W 35.36'
C14	110.98'	170.00'	37°24'10"	S51°10'47"E 109.02'
C15	27.48'	230.00'	6°50'44"	N35°54'05"W 27.46'
C39	507.30'	1040.00'	27°56'54"	N50°45'18"E 502.29'