

WINTER	
INSUL. DIST.	0
LTO. AREA	3
VOLT. AREA	2
LOADING	L
GRASSLANDS	

GAS SYSTEM NOTES:
 1) FOR TRENCH DETAILS AND NOTES REFER TO SHEET 2 OF 3.
 2) FOR INSTALLATION STANDARDS REFER TO GAS SYSTEM SPECIFICATIONS BOOK.

NOTES

DEVELOPER'S RESPONSIBILITIES
 PROVIDE ALL CONDUITS, EXCAVATING, TRENCHING, AND BACKFILL. PROVIDE SUITABLE LOCATIONS FOR THE DISTRIBUTION SYSTEM WITH PHYSICAL PROTECTION FOR PROMOUNTED TRANSFORMERS OR SUBSURFACE EQUIPMENT FROM SOIL EROSION, OR VEHICULAR TRAFFIC. INSTALL BARRIER POSTS IF REQUIRED. INSTALL STREET LIGHTS AND CONDUIT TO CONNECTION POINTS. COORDINATE ALL FACILITIES FOR JOINT TRENCH INSTALLATION.

PG&E'S RESPONSIBILITIES
 THE DISTRIBUTION SYSTEM INCLUDING PRIMARY AND SECONDARY CONDUITS, RISER MATERIAL, SPLICE BOXES, PROMOUNTED TRANSFORMERS, SWITCHES, CONNECTORS, ETC. PERFORM ALL WORK WITHIN 200' OUTSIDE THE DEVELOPMENT BOUNDARIES PER RULE 15.1. PERFORM WORK BEYOND 200' PER RULE 1504 DIFF. IN COST. INSPECT DEVELOPER'S TRENCHING AND CONDUIT INSTALLATION.

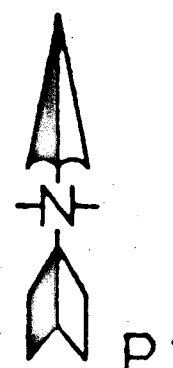
SKETCH LOC.	TFR #	TYPE	KVA	# CUST.	PHASE	COORDINATE #
2	1002	PMT	75	15	111	82
26	1003	PMT	75	14	104	86
18	1004	PMT	100	10	123	111
35	1010	DBUF.	25/10	1	25	10

PROPOSED	DESCRIPTION
— P3 —	3 PHASE PRIMARY CONDUCTOR/CABLE - SIZE AS NOTED
— S3 —	SECONDARY TRIPLEX DB CABLE AS NOTED
— F3 —	SERVICE CONDUCTOR/CABLE - SIZE AS NOTED - FUTURE
— SL —	STREETLIGHT COND./CABLE - #8 AL DUPL. DB CUST. INSTALLED
— C —	CONDUIT - SIZE AND TYPE AS NOTED BY CUST.
⊗	17" X 38" SECONDARY SPLICE BOX
⊗	24" X 38" SECONDARY SPLICE BOX
⊗	38" X 48" SECONDARY SPLICE BOX
⊗	3' X 3' PRIMARY SPLICE BOX
⊗	PROMOUNT TRANSFORMER - 1 PHASE OR 3 PHASE AS NOTED
⊗	3 ⌀ SUBSURF. DUPL. TRANSFORMER IN 3X3' BOX
⊗	STREET LIGHT LUMINAIRE - L62-A APPLICANT INSTALLED
⊗	SUBSURFACE 3 WAY 2 WAY SWITCHED IN 3 X 3 BOX

GAS SYSTEMS ENGINEERING
 design • contracting • maintenance
 P.O. BOX 28215 SACRAMENTO, CA 95828 (916) 485-3397

PROPANE GAS SYSTEM DISTRIBUTION FACILITIES WALLACE ESTATES NO. 1

OWNER: PG&E DATE: 7-11-90
 CHECKED: JRS X00 NO: 2032
 APPROVED: O.K. DATE: 5-9-90
 SCALES: 1"=100'



P3-18

NO.	DATE	DESCRIPTION	GH/SPEC	DWN.	CHKD.	SUPV.	APVD.	BY	NO.	DATE	DESCRIPTION	GH/SPEC	DWN.	CHKD.	SUPV.	APVD.	BY

WALLACE ESTATES UNIT 1

PACIFIC GAS AND ELECTRIC COMPANY
 SAN FRANCISCO, CALIFORNIA

BILL OF MATERIAL	REV.
DWG LIST B: WALLACE1	
SUPSDS	
SUPSD BY	
SHEET NO. 1 OF 3 SHEETS	
8731E19536	

D-3546-A

CAMANCHE PARKWAY

RUN #4/B TRI. UG SERVICE IN APPL. 3" CONDUIT 180' TO ELECTRIC GATE

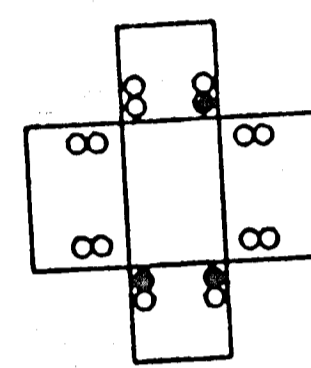
INSTALL 3" PL VALVE PER SPECS

3" HP MAX

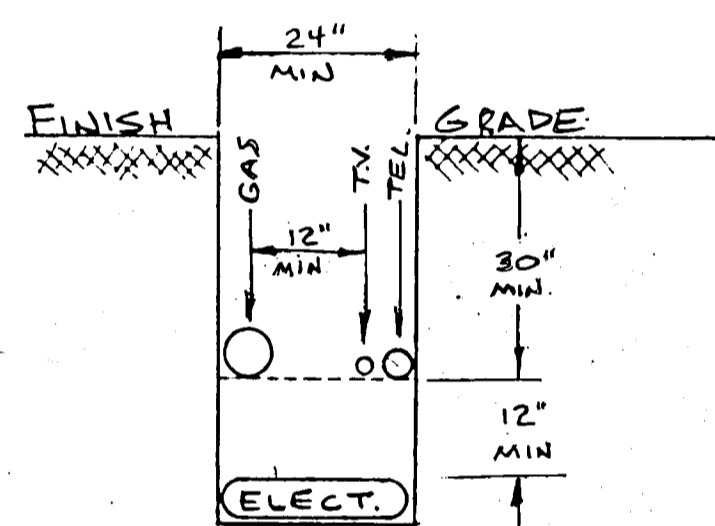
FUTURE PHASE

FUTURE SEC. DUCT WHIMBREL DRIVE

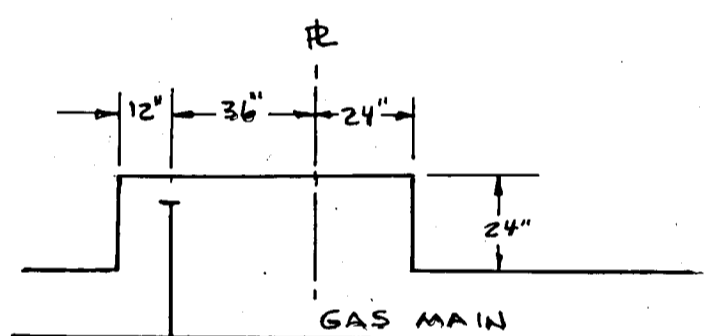
SL# 459 150M



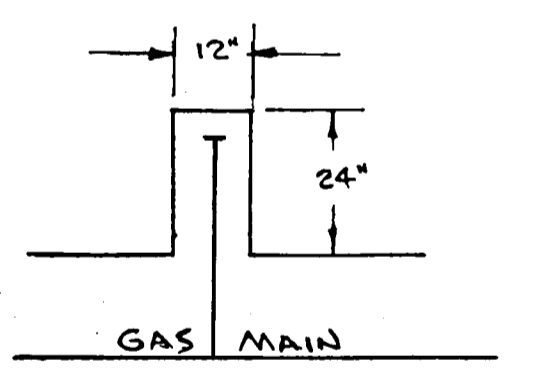
BOX LAYOUT LOC. 85



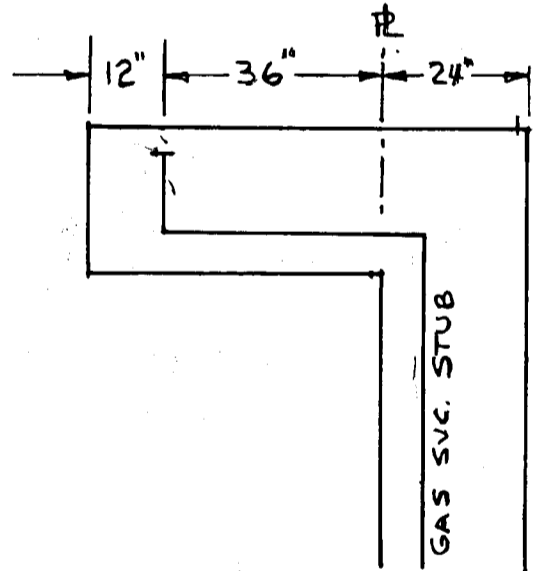
TRENCH DETAILS



SHORT SIDE STUB KNOCKOUT (J.T.)



GAS ONLY KNOCKOUT

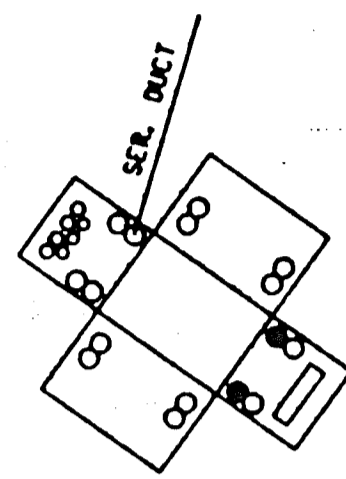


LONG SIDE STUB KNOCKOUT (J.T.)

PROPOSED GAS MAIN W/#14 CU LOCATOR WIRE

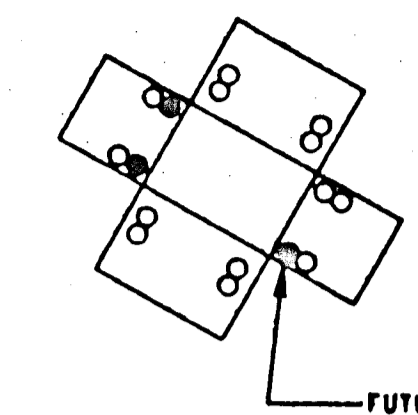
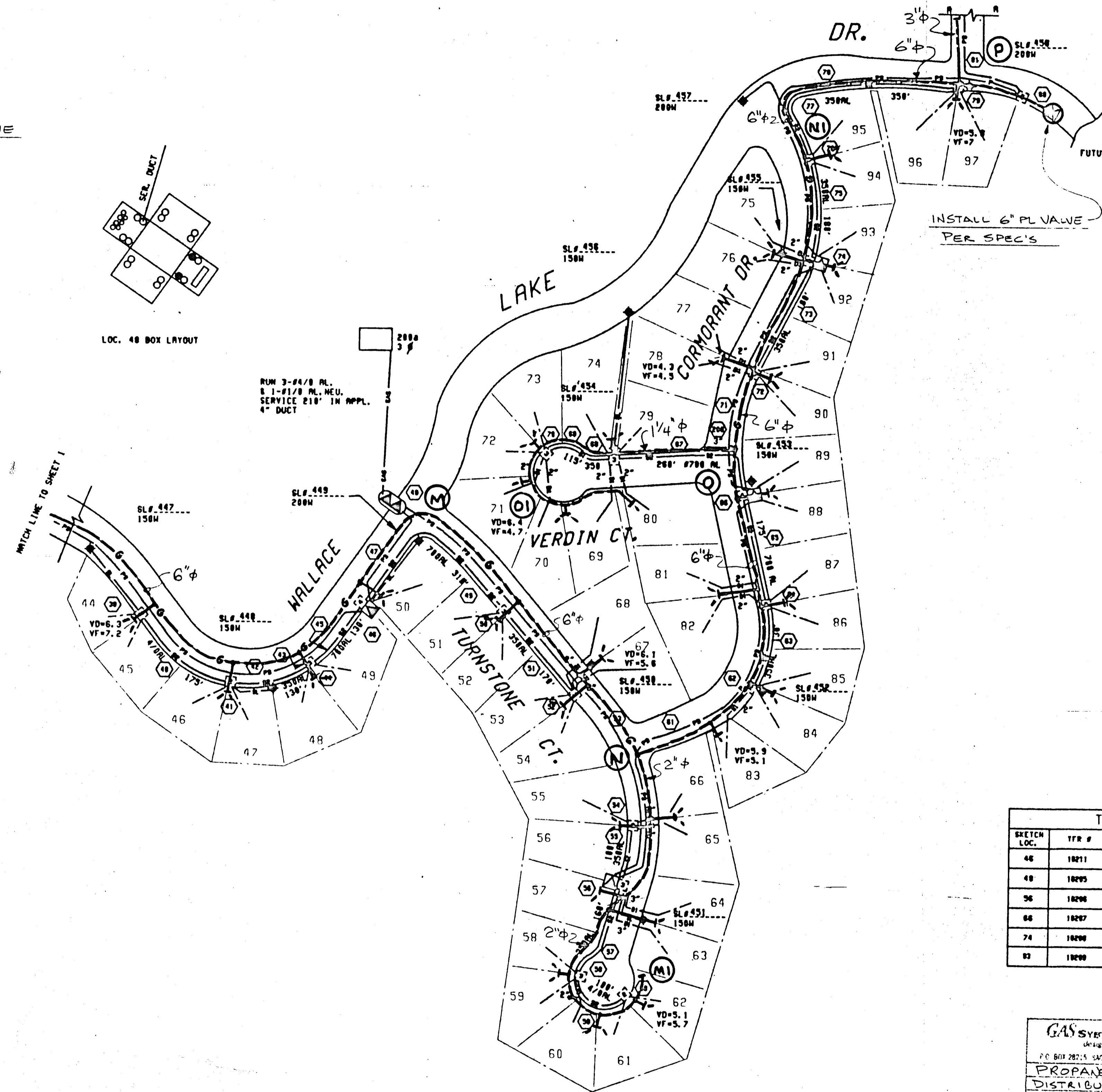
NOTES:

- 1) SAND REQUIREMENTS: 4" UNDER & 6" OVER ALL GAS FACILITIES.
- 2) ALL GAS STUB SERVICES SHALL BE 3/4" IPS
- 3) ALL WORK TO BE IN ACCORDANCE WITH P.G. & E. STANDARDS AND SPECS.
- 4) CONTRACTOR TO INSTALL CONDUIT XINGS ON MAIN & STUB SVC XINGS.
- 5) CONTRACTOR TO COORDINATE ALL TRENCHING & INSTALLATION WITH P.G. & E. REPRESENTATIVE.
- 6) SEE "SPECIFIC CONDITIONS FOR GAS MAIN & SERVICE INSTALLATION WORK", FOR MATERIALS & VENDORS APPROVED LISTS.



LOC. 48 BOX LAYOUT

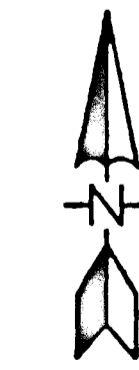
RUN 3-#4/B RL. S. 1-#1/8 RL. MED. SERVICE 210' IN APPL. 4" DUCT



LOC. 88 BOX LAYOUT

TRANSFORMER DATA TABLE						
SKETCH LOC.	TFR #	TYPE	KVA	# CUST	EST. DATE	COORDINATE #
46	18211	PMT	50	12	96	3186317-61855
48	18295	DMW	25/15	1	20	3186317-61873
56	18296	PMT	50	12	99	3186363-61867
66	18297	PMT	75	17	105	3186360-61880
74	18298	PMT	50	12	99	3186365-61885
82	18299	PMT	25	1	5	3186370-61895

GAS SYSTEMS ENGINEERING
 DESIGN & CONTRACTING & EQUIPMENT
 70 BOY 28215 SACRAMENTO CALIFORNIA 95834
PROPANE GAS SYSTEM DISTRIBUTION FACILITIES
 WALLACE ESTATES NO. 1
 DRAWN: RC DATE: 7-11-90
 CHECKED: JRS JOB NO: 0032
 APPROVED: SCALE: SHOWN
 DWG. NO: 0032-



P3-18

NO.	DATE	DESCRIPTION	GN/SPEC	DWN.	CHKD.	SUPV.	APVD.	BY	NO.	DATE	DESCRIPTION	GN/SPEC	DWN.	CHKD.	SUPV.	APVD.	BY
APPROVED BY: DM 4826459 SUPV. RSC DSGN. JRS DWN. JRS CHKD. LAG O.K. DATE: 8-10-90 SCALES: 1"=100' WALLACE ESTATES UNIT 1 PACIFIC GAS AND ELECTRIC COMPANY SAN FRANCISCO, CALIFORNIA																	
BILL OF MAIL DWG LIST: 01 WALLACE2 SUPSOS SUPSD BY SHEET NO. 2 OF 3 SHEETS 0731E19536 REV.																	

D-3546A

WINTER	
INSUL. DIST.	D
LTO. AREA	3
VOLT. AREA	2
LOADING	L
GRASSLANDS	

GAS SYSTEM NOTES:
 1) FOR TRENCH DETAILS AND NOTES REFER TO SHEET 2 OF 3.
 2) FOR INSTALLATION STANDARDS REFER TO GAS SYSTEM SPECIFICATIONS BOOK.

NOTES

DEVELOPER'S RESPONSIBILITIES
 PROVIDE ALL CONDUITS, EXCAVATING, TRENCHING, AND BACKFILL. PROVIDE SUITABLE LOCATIONS FOR THE DISTRIBUTION SYSTEM WITH PHYSICAL PROTECTION FOR PANOULATED TRANSFORMERS OR SURFSURFACE EQUIPMENT FROM SOIL EROSION, OR VEHICULAR TRAFFIC. INSTALL BARRIER POSTS IF REQUIRED. INSTALL STREET LIGHTS AND CONDUCTOR TO CONNECTION POINTS. COORDINATE ALL FACILITIES FOR JOINT TRENCH INSTALLATION.

ENGINEER'S RESPONSIBILITIES
 THE DISTRIBUTION SYSTEM INCLUDING PRIMARY AND SECONDARY CONDUCTORS, RISER MATERIAL, SPLICE BOXES, PANOULATED TRANSFORMERS, SWITCHES, CONNECTORS, ETC. PERFORM ALL WORK WITHIN 200' OUTSIDE THE DEVELOPMENT BOUNDARIES PER RULE 15.1. PERFORM WORK BEYOND 200' PER RULE 1504 D177, IN COST. INSPECT DEVELOPER'S TRENCHING AND CONDUIT INSTALLATION.

SKETCH LOC.	TYR #	TYPE	KVA	CHST	W	D	H	COORDINATE #
R	10824	PANT	75	18	111	92		310040-01027
PS	10823	PANT	75	14	104	86		310040-01700
18	10824	PANT	100	18	123	111		310040-01023
M	10818	SMALL	25/10	1	25	19		310040-01712

LEGEND

SYMBOL	DESCRIPTION
— P —	3 PHASE PRIMARY CONDUCTOR/CABLE - SIZE AS NOTED
— S —	SECONDARY TRIPLEX OR CABLE AS NOTED
— F —	SERVICE CONDUCTOR/CABLE - SIZE AS NOTED - FUTURE
— L —	STREETLIGHT COND./CABLE - #S AL. DUPL. DR. CUST. INSTALLED
— C —	CONDUIT - SIZE AND TYPE AS NOTED BY CUST.
⊗	17" X 30" SECONDARY SPLICE BOX
⊗	24" X 36" SECONDARY SPLICE BOX
⊗	36" X 48" SECONDARY SPLICE BOX
⊗	3" X 5" PRIMARY SPLICE BOX
⊗	PANOULATED TRANSFORMER - 1 PHASE OR 3 PHASE AS NOTED
⊗	3 ♂ SUBSURF. DUPL. TRANSFORMER IN 3X5 BOX
⊗	STREET LIGHT LUMINAIRE - L62-A APPLICANT INSTALLED
⊗	SUBSURFACE 3 WAY 2 WAY SWITCHED IN 3 X 5 BOX

GAS SYSTEMS ENGINEERING
 DESIGN • CONTRACTING • MAINTENANCE
 P.O. BOX 28215 SACRAMENTO, CA 95828 (916) 486-3597
PROPANE GAS SYSTEM DISTRIBUTION FACILITIES
 WALLACE ESTATES NO. 1
 DRAWN: JRS DATE: 7-11-90
 CHECKED: JRS DATE: 08-03-90
 APPROVED: JRS SCALE: SHOWN DWG. NO. 0032-



P3-18

NO.	DATE	DESCRIPTION	DR./SPEC. DWN.	CHKD.	SUPV.	APVD.	BY	NO.	DATE	DESCRIPTION	DR./SPEC. DWN.	CHKD.	SUPV.	APVD.	BY

APPROVED BY: GM 4826459
 SUPV. JRS
 DESGN. JRS
 DWN. JRS
 CHKD. JRS
 DATE: 5-9-90
 SCALES: 1"=100'

WALLACE ESTATES UNIT 1
 PACIFIC GAS AND ELECTRIC COMPANY
 SAN FRANCISCO, CALIFORNIA

BILL OF MATERIAL
 DWG. LIST: 0-WALLACE1
 SUPSOS
 SUPSO BY
 SHEET NO. 1 OF 3 SHEETS
 0731E10536 REV.

D-3546-A

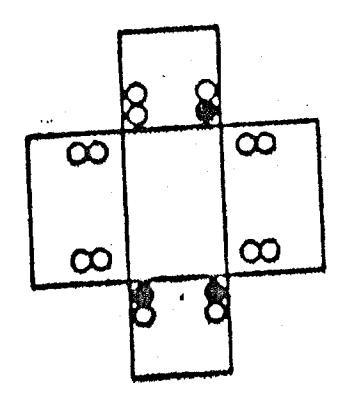
CAMANCHE PARKWAY

RUN #4/8 TRI. LG SERVICE IN APPL. 3" CONDUIT 180' TO ELECTRIC GATE

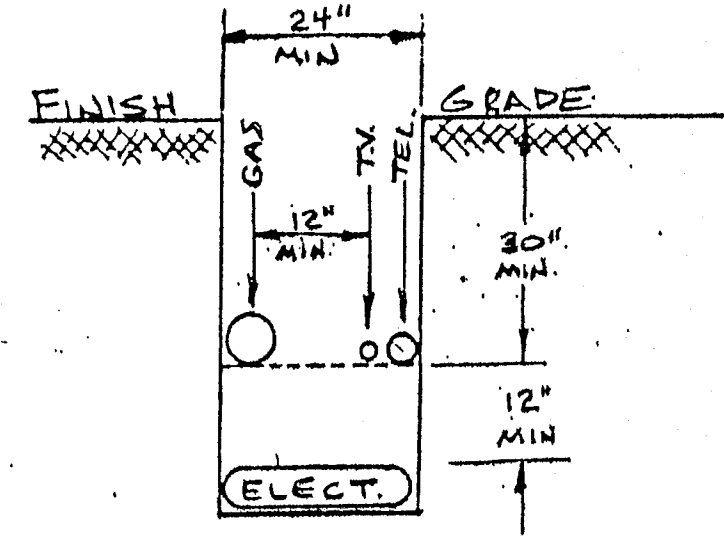
INSTALL 3" PL VALVE PER SPEC'S

WALLACE LAKE DRIVE NORTH

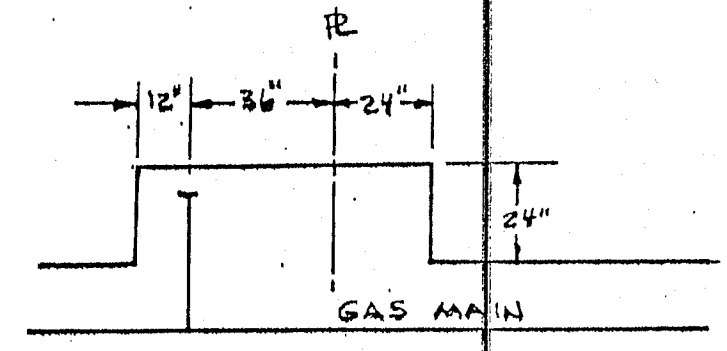
WHIMBREL DRIVE



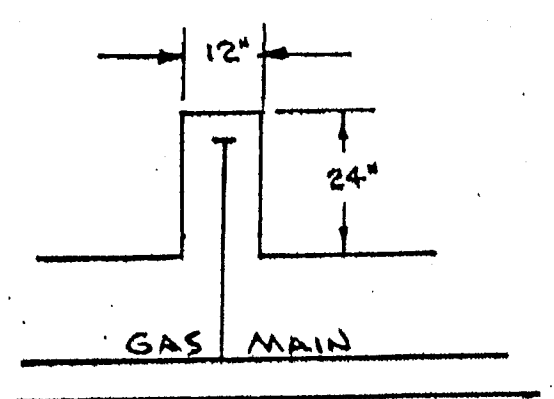
BOX LAYOUT LOC. 85



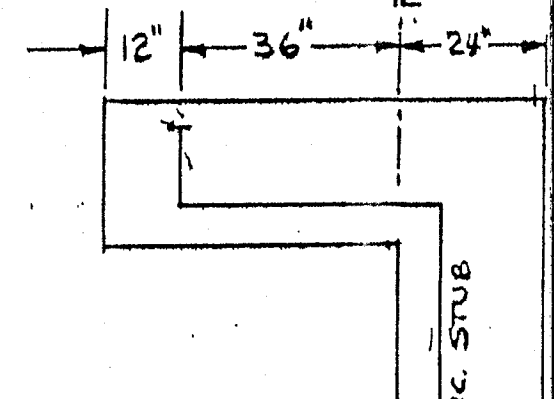
TRENCH DETAILS



SHORT SIDE STUB KNOCKOUT (J.T.)



GAS ONLY KNOCKOUT

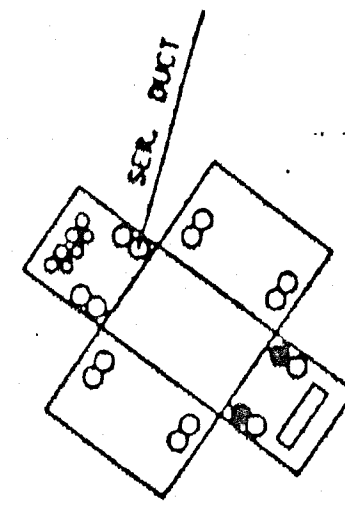


LONG SIDE STUB KNOCKOUT (J.T.)

PROPOSED GAS MAIN
W/4" CU. LOCATOR WIRE

NOTES:

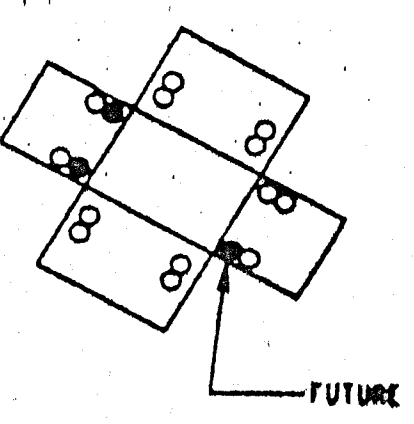
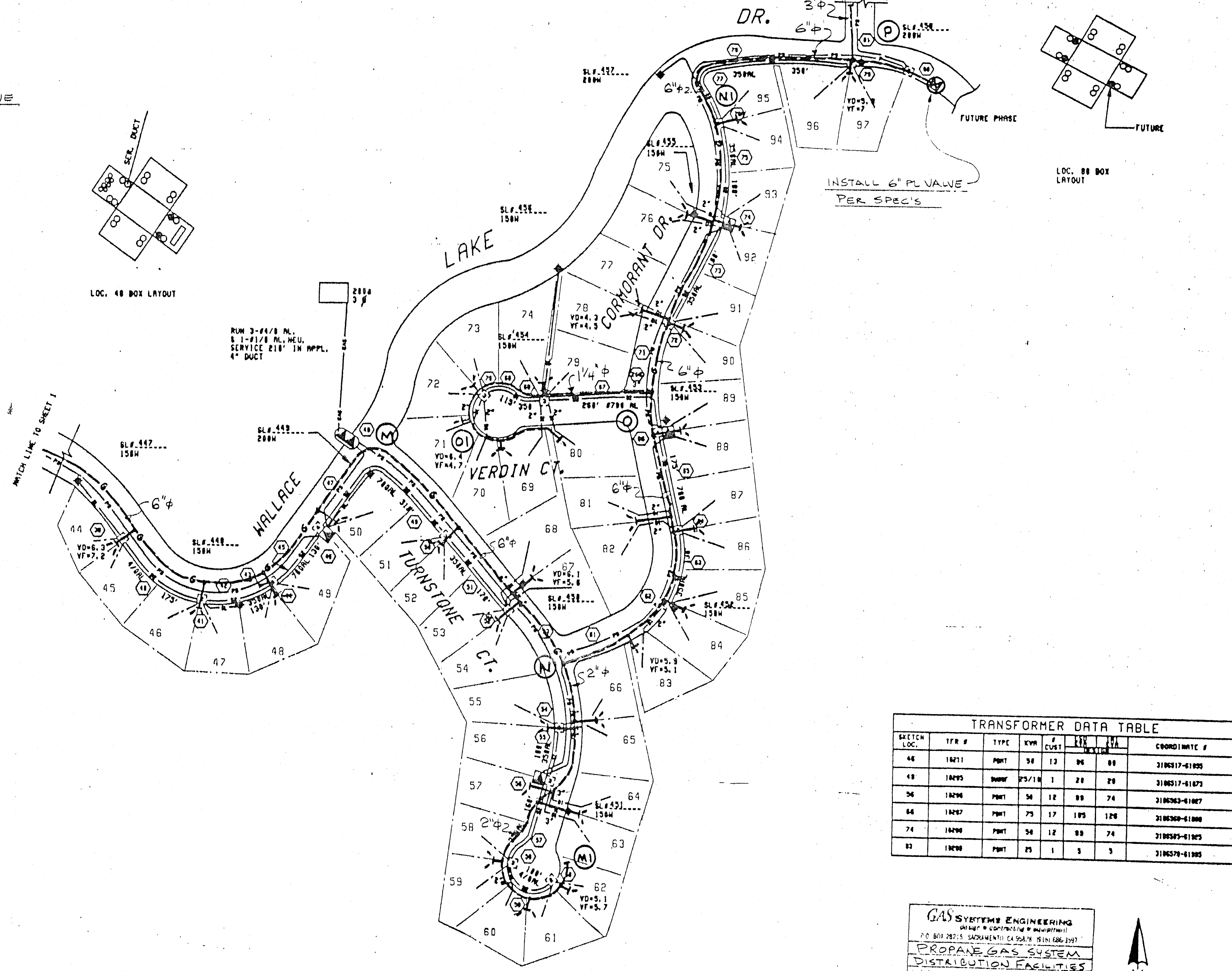
- 1) SAND REQUIREMENTS: 4" UNDER & 6" OVER ALL GAS FACILITIES
- 2) ALL GAS STUB SERVICES SHALL BE 3/4" IPS
- 3) ALL WORK TO BE IN ACCORDANCE WITH P.G.&E. STANDARDS AND SPEC'S.
- 4) CONTRACTOR TO INSTALL CONDUIT XINGS ON MAIN & STUB SVC XINGS.
- 5) CONTRACTOR TO COORDINATE ALL TRENCHING & INSTALLATION WITH P.G.&E. REPRESENTATIVE.
- 6) SEE "SPECIFIC CONDITIONS FOR GAS MAIN & SERVICE INSTALLATION WORK", FOR MATERIALS & VENDORS APPROVED LISTS.



LOC. 48 BOX LAYOUT

RUN 3-4/8 PL. & 1-1/2" PL. MEU. SERVICE 210' IN APPL. 4" DUCT

WITCH LINE TO SHEET 1

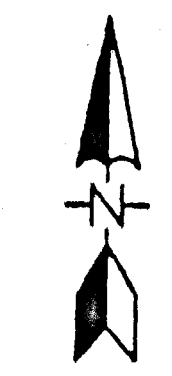


LOC. 88 BOX LAYOUT

INSTALL 6" PL VALVE PER SPEC'S

TRANSFORMER DATA TABLE							
SKETCH LOC.	TFR #	TYPE	KVA	# CUST	COORDINATE #	COORDINATE #	
48	18211	PNT	50	12	06	88	318517-61825
49	18295	DMRF	25/10	1	28	28	318517-61873
56	18298	PNT	50	12	88	74	318523-61887
64	18297	PNT	75	17	185	128	318530-61888
74	18296	PNT	50	12	88	74	318523-61885
83	18299	PNT	25	1	5	3	318527-61885

GAS SYSTEMS ENGINEERING
P.O. BOX 28215 SACRAMENTO, CALIFORNIA 95818-0215
PROANE GAS SYSTEM
DISTRIBUTION FACILITIES
WALLACE ESTATES UNIT 1
DRAWN: JRS DATE: 7-11-90
CHECKED: JRS NO. 0032
APPROVED: JRS SCALE: SHOWN DWG NO. 0032



P3-18

NO.	DATE	DESCRIPTION	GM/SPEC	OWN.	CHKD.	SUPV.	APVD.	BY	NO.	DATE	DESCRIPTION	GM/SPEC	OWN.	CHKD.	SUPV.	APVD.	BY
REVISIONS																	

APPROVED BY: GM 4826439
SUPV. RSC
DSGN. JRS
OWN. JRS
CHKD. JRS
DATE: 5-10-90
SCALE: 1"=100'

WALLACE ESTATES
UNIT 1

PACIFIC GAS AND ELECTRIC COMPANY
SAN FRANCISCO, CALIFORNIA

BILL OF MAIL
DWG LIST BY: WALLACE2
SUPSOS
SUPSO BY
DATE: 5-10-90
SHEET NO. 2 OF 3 SHEETS
REV. 0731E19536